



## BULLETIN

**National Orienteering Ranking “INOV8 cup” Competition on Middle and Long Distances**

**CENTRAL EUROPEAN SPRING ORIENTEERING MEETING 2019  
Held the 12-th year**



Orienteering club KOBRA Bratislava in cooperation with municipality of Šaštín-Stráže and the main partner - Slovenská sporiteľňa a.s. welcome the competitors on 12-th international orienteering competition CESOM 2019, in Gazárka resort.

Please mind the following information for successful participation:

- Organizer** Slovak orienteering sports association  
Orienteering club KOBRA Bratislava with municipality of Šaštín-Stráže.
- Date** 6-th April, 2019 (Saturday) national ranking competition INOV-8 cup in middle distance,  
7-th April, 2019 (Sunday) national ranking INOV-8 cup competition in long distance.
- Classification** Open day individual competitions with defined order of control points.
- Event Centre** Šaštín-Stráže, Gazárka resort (GPS 48.6279, 17.1388).
- Parking** Public parking area near to the Event Centre (see image no. 1).

- Registration** In the Event Centre:  
6-th April 2019 09:30-12:00, **changes possible only until 11:30**  
7-th April 2019 08:00-09:00.
- Categories** According to invitation. **On top of it we extended the categories by category W70-A. The code of category RD was changed to category MWR and the course of this category is different as the course of cat. W/M-10C.**
- Accommodation** Sleeping in own sleeping bags – gym of elementary school in Borský Svätý Jur. The facility will be opened at 18:00 on Saturday, please leave the facility latest at 9:30 on Sunday.
- The club leaders are responsible for leaving the accommodation facilities clean and tidy.**
- Catering** In buffet in Event Centre and in nearby Pizzeria Tropic.
- Start 000** 6-th April, 2019 13:00 (Middle)  
7-th April, 2019 09:30 (Long)  
Route to start from Event Centre marked with blue tapes.
- Starting bibs** All competitors have to wear starting numbers to make them visible, on their chest.
- Descriptions** The control point descriptions are printed on the map, in the Event Centre they will be available in printed form.
- WC** In the Event Centre.
- Washing** In the Event Centre.
- Emb. areas** Warm-up possible only in the Event Centre and on the marked way to start.
- Distances**
- |   |              |
|---|--------------|
| sleeping bags accommodation – Event Centre (EC) | 8,5 km,      |
| parking – EC                                    | 400 - 600 m, |
| EC – middle start                               | 600 m,       |
| EC – middle finish                              | 0 m,         |
| EC – long start                                 | 300 m,       |
| EC – long finish                                | 0 m.         |
- Child. race** At event centre both days, control points using images. Free start time during middle and long start.  
Classical paper punching to the map.
- Free start** The competitors of W/M10C, MWR and N can start in chosen start minute, following the start officers orders. Possible start time 000 – last startlist group.
- Maps** **middle: Gazárka 2019, 1 : 10 000, E=2,5 m, format A4** for all categories,

**Long:**

Jubilejný les 1, **1 : 15 000, E=2,5 m, format A4** for categories:  
M21-E, W21-E, W-18A, M-18A, W-20A, M-20A, M35-A

Jubilejný les 2, **1 : 10 000, E=2,5 m, format A4** for categories:  
W/M-10C, MWR, N, K3, W/M-12A, W/M-14A, W-16A, W45-A, W50-A,  
W55-A, W60-A, W65-A, W70-A, M70-A

Jubilejný les 3, **1 : 10 000, E=2,5 m, format A3** for categories:  
W21-B, W35-A, W40-A, M-16A, M21-B, M21-D, M40-A, M45-A, M50-A,  
M55-A, M60-A, M65-A

Childrens race , **1 : 2 000, E=1 m, format A5** for categories: children

Maps for middle and long are according ISOM 2017, author O. Piják, survey  
November 2018 - March 2019.

Laser print, 100g/m<sup>2</sup> on “Pretext” paper – **waterproof.**

**The maps will be collected in finish. Club leader can pick their maps on  
SUNDAY, after last start.**

**Terrain** Flat terrain with sand dunes in some parts of the map, fine terrain details, fast and runnable pine forest with dense network of paths. On part of the map marshes and dense vegetation and undergrowth.

We recommend to use proper orienteering clothing for legs.

**It is prohibited to pass the olive green areas in the map.**

**Time limit**

middle	120 minutes
long	180 minutes

**Refreshment** Water in finish.  
Long – courses above 60 minutes estimated time – water on marked refreshment points.

**First aid** In Event Centre

**Results** 7-th April 2019 at cca 13.30.  
The winners of Slovak national ranking 2018 will be awarded on Saturday (6-th April 2019) at 16.30.

**Prizes** The first 3 competitors in each category (summary result of both competitions) win souvenir prizes.

**Org. comitee**

Competition Director	Štefan Máj	
Main referee	Paulína Májová	
Course setting	Michal Stasz	middle
	Karol Hierweg	long
secretary	Paulína Májová	

<b>Jury</b>	Jozef Pollák, Igor Patráš, Dušan Formanko.
<b>Protests</b>	Protests can be issued to main referee with 10 EUR deposit according to rules
<b>Rules</b>	The competition is held in accordance with SZOŠ rules.
<b>Attention</b>	All the competitors start at their own risk, with no possibility for a claim in case of injury happened during or as a cause of this competition.

**The Organisers**  
**Orienteering club KOBRA Bratislava, municipality of Šaštín-Stráže**  
**and Slovenská sporiteľňa, a.s.**  
**wish you a pleasant stay and long-lasting impressions!**

Štefan Máj, competition director

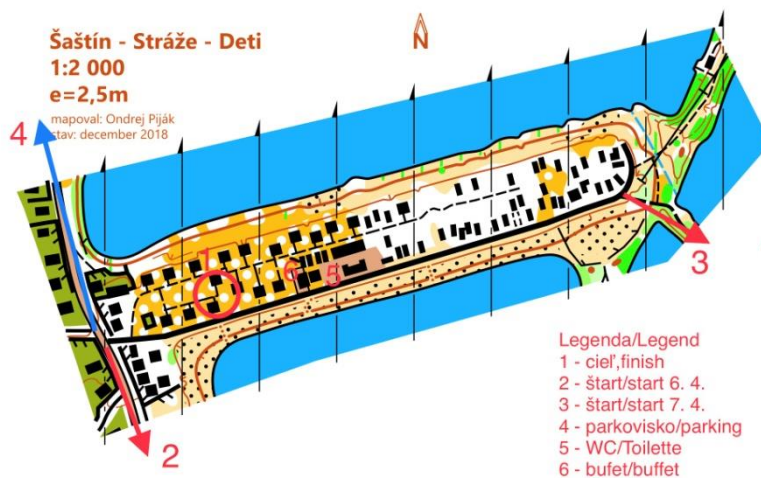
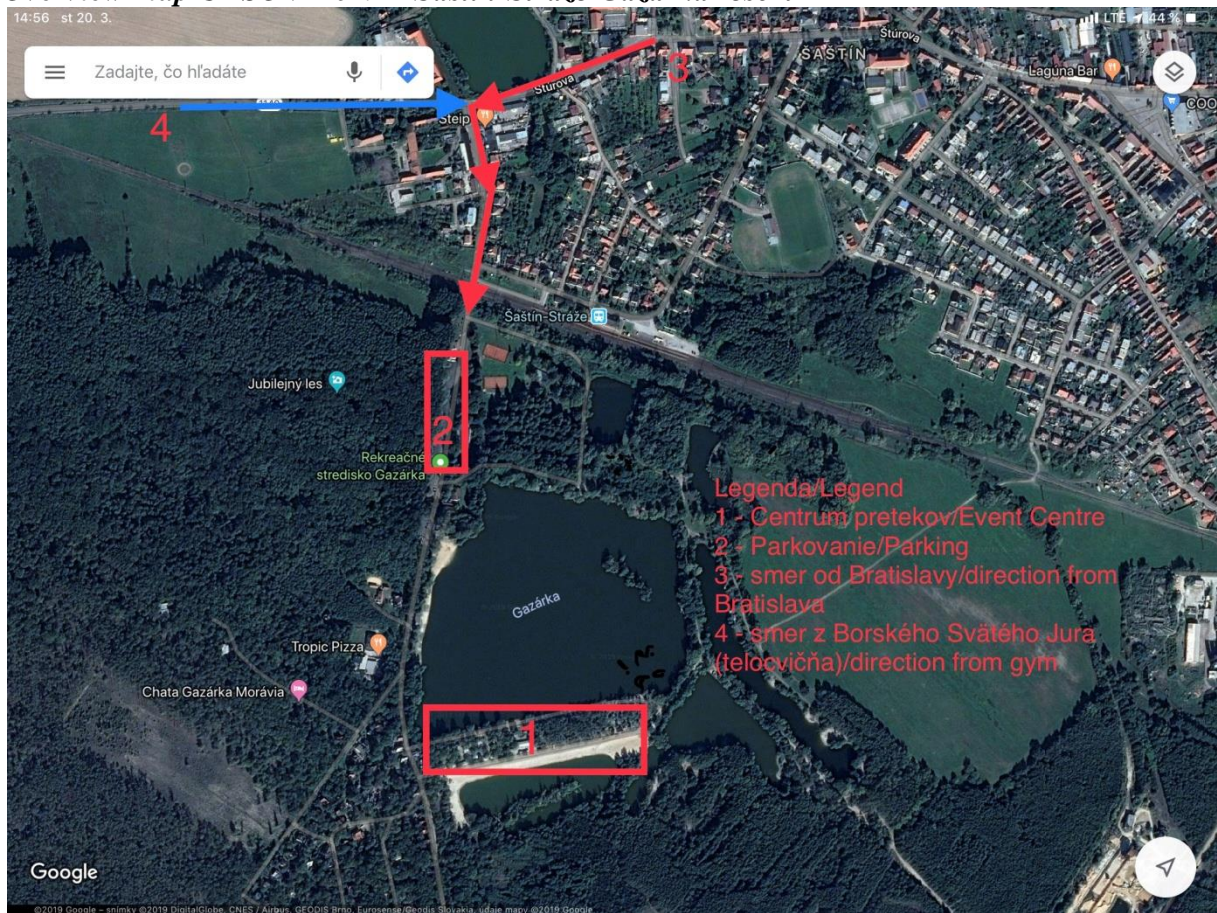
Paulína Májová, main referee



# Appendix 1

## Image Nr. 1

### Overview map CESOM 2019 – Šaštín-Stráže Gazárka resort



## Appendix 2

### Course lengths, climbings and number of control points for categories/competitions

Category	Length [km]		Climbing [m]		Controls	
	E1	E2	E1	E2	E1	E2
W-12A	2,5	2,9	15	15	7	7
W-14A	2,9	3,5	15	20	8	9
W-16A	3,4	4,8	15	25	9	10
W-18A	4,1	6,7	25	45	13	13
W-20A	4,1	6,7	25	45	13	13
W21-E	5,7	10,6	35	55	16	20
W21-B	4,5	7,2	25	45	16	14
W35-A	4,1	6,7	25	45	13	13
W40-A	4,0	6,1	25	40	9	13
W45-A	3,7	5,3	20	35	9	11
W50-A	3,4	4,8	15	25	9	10
W55-A	3,4	4,8	15	25	9	10
W60-A	2,9	4,0	15	20	8	10
W65-A	2,9	4,0	15	20	8	10
W70-A	2,9	4,0	15	20	8	10
M-12A	2,5	2,9	15	15	7	7
M-14A	3,7	5,8	20	40	9	12
M-16A	5,0	8,6	30	50	13	16
M-18A	5,4	11,2	35	60	14	19
M-20A	5,4	11,2	35	60	14	19
M21-E	7,1	16,3	50	80	19	29
M21-B	5,7	12,4	35	65	16	22
M21-D	4,6	7,9	25	50	12	16
M35-A	5,7	10,6	35	55	16	20
M40-A	5,0	8,6	30	50	13	16
M45-A	4,6	7,9	25	50	12	16
M50-A	4,5	7,2	25	45	16	14
M55-A	4,1	6,7	25	45	13	13
M60-A	4,0	6,1	25	40	9	13
M65-A	3,7	5,8	20	40	9	12
M70-A	3,7	5,3	20	35	9	11
W-10C	1,8	1,3	10	10	6	7
M-10C	1,8	1,3	10	10	6	7
K3	2,9	3,5	15	20	8	9
N	2,5	2,9	15	15	7	7
MWR	1,3	1,1	10	10	5	5
Childrens' race	do 1km	do 1km	5	5	7	7