



## BULLETIN 1

### National Orienteering Ranking Competition – INOV 8 Cup Middle and Long Distance

### CENTRAL EUROPEAN SPRING ORIENTEERING MEETING 2022 Held the 15-th year



<b>Organizer</b>	Slovak Orienteering Association Orienteering club KOBRA Bratislava with municipality of Borský Svätý Jur.
<b>Date</b>	2 <sup>nd</sup> April 2022 (Saturday) - national ranking competition - middle distance 3 <sup>rd</sup> April 2022 (Sunday) - national ranking competition - long distance
<b>Classification</b>	2 <sup>nd</sup> April 2022 – open, day individual competition on middle distance, defined order of control points, 3 <sup>rd</sup> April 2022 – open, day individual competition on long distance, defined order of control points.
<b>Event Centre</b>	Borský Mikuláš, municipal office <a href="https://www.google.com/maps/place/48.62861111111111,17.11111111111111">N 48°37.671' E 017°12.772'</a>
<b>Classes</b>	W -12A, -14A, -16A, -18A, -20A, 21-E,B, 35-A, 40-A, 45-A, 50-A, 55-A, 60-A, 65-A, 70-A M -12A, -14A, -16A, -18A, -20A, 21-E,B,D, 35-A, 40-A, 45-A, 50-A, 55-A, 60-A, 65-A, 70-A Open classes: W -10, M -10, MWR (children with parents) - easier courses, K3 - challenging, approx. 3 km course, N - easy course for beginners,

**Children race and its registration in the event centre, entry free of charge.**

In case of less than 3 competitor entries per a class, it can be merged with another class by the organizer.

**Entries** Via online entry system [IS SZOŠ](#).

**Entry fee** For CESOM 2022 (both races), according to class and deadline:

Class	By 01.03.22	By 20.03.22
Children race	0,-EUR	0,-EUR
W/M-10, -12, N, MWR	10,-EUR	14,-EUR
W/M-14, -16, 60- and older, K3	14,-EUR	20,-EUR
Other classes	18,-EUR	26,-EUR

For each individual race according to class and deadline:

Class	By 01.03.22	By 20.03.22
Children race	0,-EUR	0,-EUR
W/M-10, -12, N, MWR	6,-EUR	8,-EUR
W/M-14, -16, 60- and older, K3	8,-EUR	12,-EUR
Other classes	10,-EUR	14,-EUR

Pay via payment order to the account:

**KOBRA Bratislava, SLSP**

IBAN: **SK61 0900 0000 0001 1080 4915,**

S.W.I.F.T. **GIBASKBX**

within the same deadline as the entry.

The entry is valid only if the payment is credited to the account until the day of entry deadline (1<sup>st</sup>/20<sup>th</sup> March).

**Additional entries or class changes after 20<sup>th</sup> March will be accepted only in exceptional cases within free places in start list and for double fee (compared to 1<sup>st</sup> March entry fee).**

**Registration** In the event centre:  
2<sup>nd</sup> April 2022 09:00-11:00,  
3<sup>rd</sup> April 2022 08:00-09:00.

**Accommodation** Not provided by the organizer.

**Catering** In nearby restaurants.

**Transport** Not provided by organizer. Parking in surrounding streets.

**Start 000** 2<sup>nd</sup> April 2022 13:00 Middle distance  
3<sup>rd</sup> April 2022 10:00 Long distance

**Maps** Middle distance 1:10 000; e 2,5m  
Long distance 1:15 000; e 2,5m (classes specified in Bulletin 2)  
1:10 000; e 2,5m (other classes)

Created according to ISOM 2017-2. Mapmaker Ondrej Piják, survey 11/2021 – 02/2022.

**Terrain** Plain terrain, sand dunes with indistinct terrain details, clear pine forest. Mostly excellent visibility and runnability. Dense paths network, part of terrain with varied thicket vegetation details.

- Punching** SportIdent Air+  
Renting of SI chip: **2,- EUR /person /competition.**  
SI chip loss or non returning: **30,- EUR.**
- Organising Committee**
- |                      |        |                |    |
|----------------------|--------|----------------|----|
| Competition director |        | Štefan Máj     | R1 |
| Main Referee         |        | Martin Jonáš   | R2 |
| Course setters       | Middle | Jozef Wallner  | R2 |
|                      | Long   | Karol Hierweg  | R2 |
| Secretary            |        | Paulína Májová | R1 |
- Prizes** First three competitors in each class will receive small prizes (based on sum of result times in both races).
- Information** [www.kobra-orienteeing.sk](http://www.kobra-orienteeing.sk) , e-mail: [paula.majova@gmail.com](mailto:paula.majova@gmail.com)
- Rules** SOA Orienteering rules, Competition order and Implementing rules 2022.
- COVID-19** The competition will be held in accordance with COVID-19 measures valid in Senica district in the time of competition. The details will be described in Bulletin.
- Attention** Area between Borský Mikuláš and Šajdíkove Humence (according to the map below) is a forbidden area from the moment of publication of this Bulletin.
- By taking part in the event, every participant consents to storing his personal data (name, class, club) in the information system of the Slovak Orienteering Association and publishing them on the event websites (in entry and start lists and in the results). Unless you ask the photographer for a specific exclusion, by taking part in the Event, you consent to be photographed, and waive any and all rights of publicity or privacy and grant the Organiser permission to utilise your image in documentation and marketing materials.
- All the competitors take part voluntarily and on their own responsibility, without any claim in case of injury during, or caused by this competition later on.**

Štefan Máj  
Competition Director

Martin Jonáš  
Main Referee



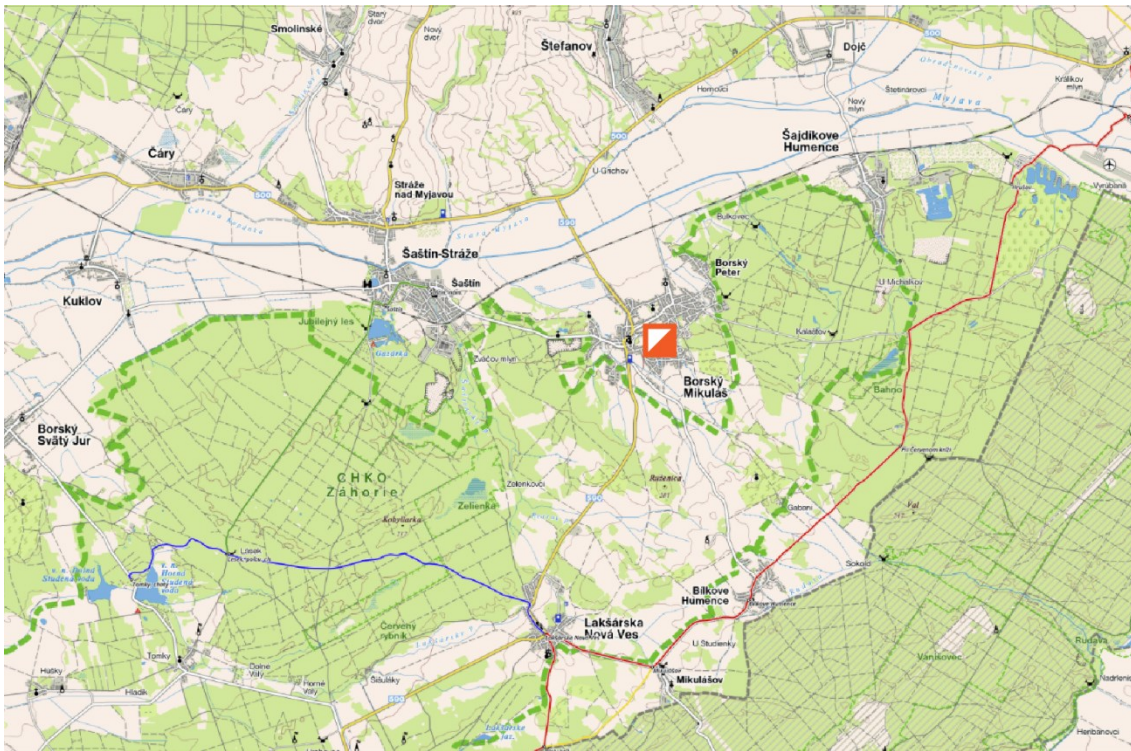


Figure 1: Event venue

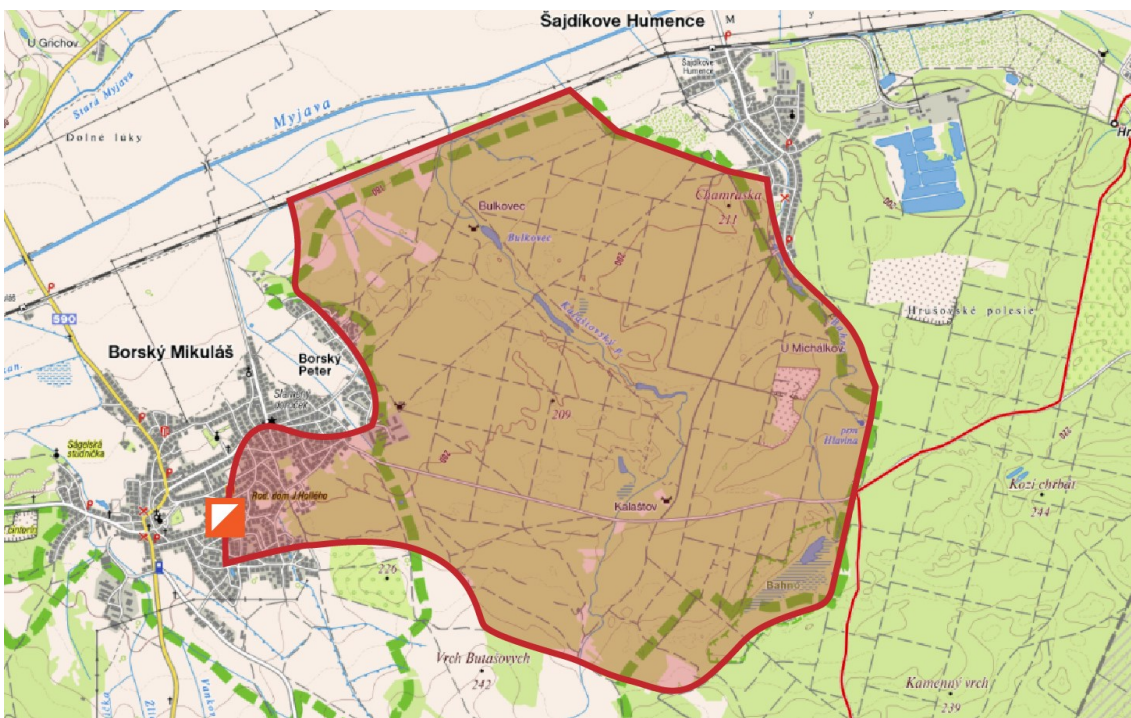


Figure 2: Forbidden area and event centre